

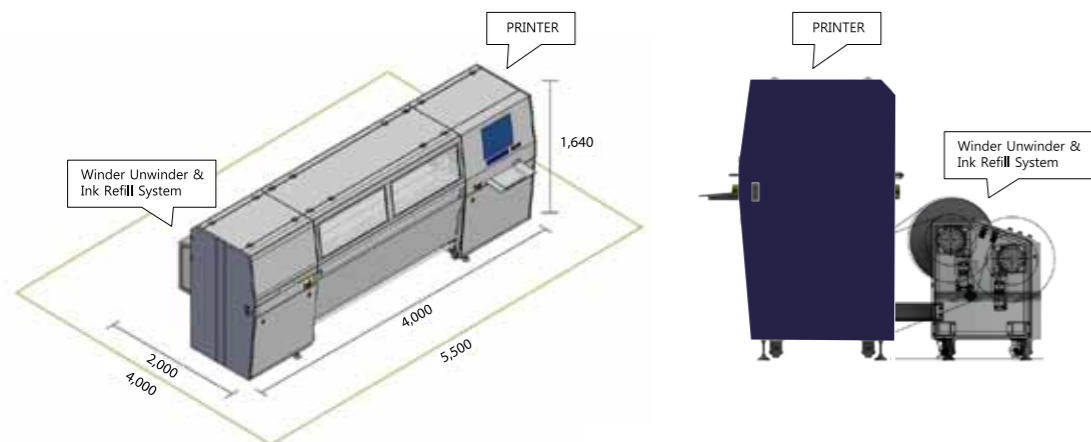
### Technical Specification

<b>Print Speed</b>	Draft Mode 175 m <sup>2</sup> /hr	Production Mode 100 m <sup>2</sup> /hr	Quality Mode 69 m <sup>2</sup> /hr
<b>Print Resolution</b>	600 x 300dpi (1 Pass)	600 x 600dpi (2 Pass)	600 x 900dpi (3 Pass)
<b>Max Print Width</b>	1,850 mm		
<b>Max Media Width</b>	1,900 mm		
<b>Print Mode</b>	Bi-Direction / Uni-Direction , Normal / Interleave I,II / DBF I,II,III		
<b>Printhead</b>	Kyocera 2,656 nozzle Printhead (2 heads)		
<b>Color</b>	4 Color - Cyan, Magenta, Yellow, Black		
<b>Ink</b>	DGI original water based F120 / F131 dye sublimation ink		
<b>Interface</b>	TCP / IP		
<b>Environmental Range</b>	Temperature : 20~28 °C Humidity : 40~70% Environment condition may affect on final printing quality.		
<b>Electricity Requirements</b>	Printer : 220~240V VAC Single Phase, 50/60 Hz / 10A Winder & Refill : 220~240V VAC Single Phase, 50/60 Hz / 3A		

\* All specifications are subject to change without notice.

### Dimension for Installation

	Uncrated				Crated			
	Length (mm)	Width (mm)	Height (mm)	Weight (kg)	Length (mm)	Width (mm)	Height (mm)	Weight (kg)
<b>Printer</b>	<b>4,000</b>	<b>900</b>	<b>1,640</b>	<b>1,200</b>	<b>4,400</b>	<b>1,330</b>	<b>2,100</b>	<b>1,600</b>
<b>Winder &amp; Refill</b>	<b>2,810</b>	<b>630</b>	<b>810</b>	<b>200</b>	<b>3,440</b>	<b>900</b>	<b>1,100</b>	<b>350</b>



### DGI Original Ink

MODEL	F120 (Standard Original)	F131 (Premium Original)
<b>Type</b>	Water based Dye sublimation	Water based Dye sublimation
<b>Capacity</b>	5Kg / Bottle	1Kg / Bottle
<b>Color</b>	C, M, Y, K and Cleaning Solution	C, M, Y, K and Cleaning Solution
<b>Package</b>	3 Bottles / Box	16 Bottles / Box

DGI HSFT-AB-250315

**Italian distributor**

**TREND**  
Digital Printing Solutions

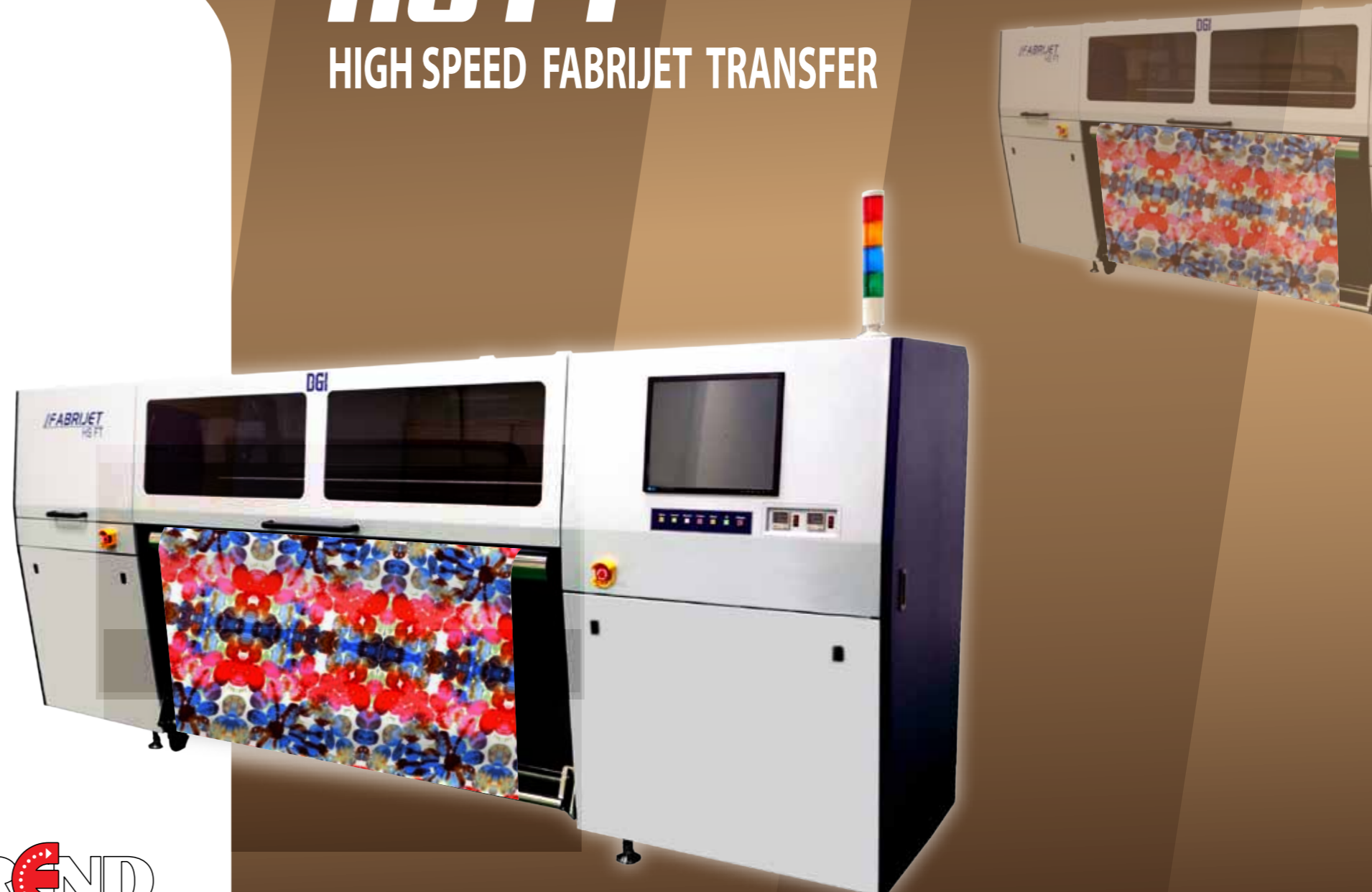
Trend s.r.l.  
Via Mario Corrieri, 12 - 05100 Terni (TR), Italy  
Phone: [+39] 0744 800680 - Fax: [+39] 0744 800514  
[www.trendsrl.net](http://www.trendsrl.net) [info@trendsrl.net](mailto:info@trendsrl.net)



52, Cheongdam-Ro, Yangju-si, Gyeonggi-do, Korea, 482-020  
TEL : +82-31-820-8900 A/S : +82-31-820-8880  
FAX : +82-31-820-8990 E-MAIL : [sales@dgi-net.com](mailto:sales@dgi-net.com)  
[www.dgi-net.com](http://www.dgi-net.com)  
[www.facebook.com/dgikorea](https://www.facebook.com/dgikorea)



# FABRIJET HS FT HIGH SPEED FABRIJET TRANSFER



See product information from DGI App & DGI facebook



# 100sqm/h @ Real Production mode



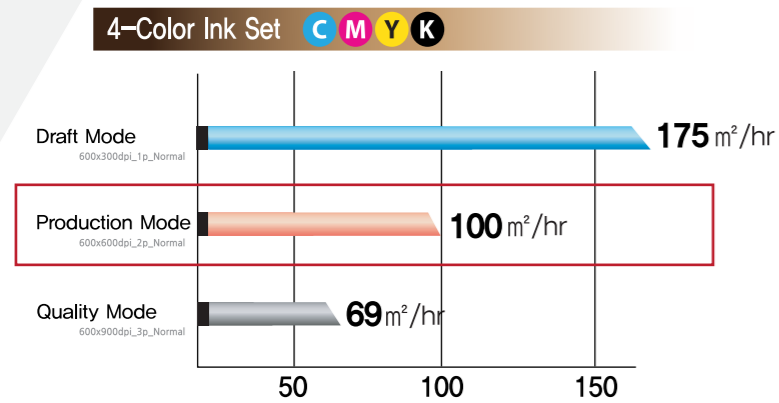
## PRINT HEAD



Kyocera 300 dpi Printhead

Category	Description
Ink Type	Water based
Size(mm)	200 x 36 x 68.5(H)
Number of Nozzle	2,656
Nominal Resolution	300 dpi
Max Frequency	30 KHz
Dot Size	5, 7, 12, 18 pl (Variable)

## PRINT SPEED

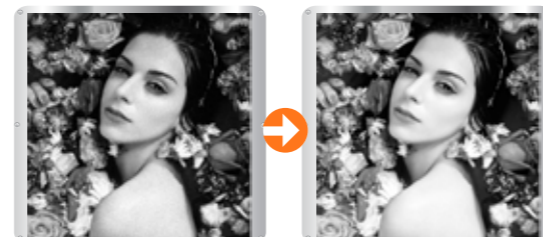
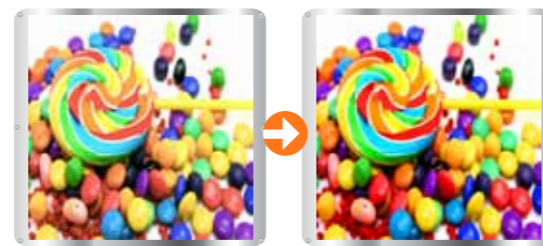
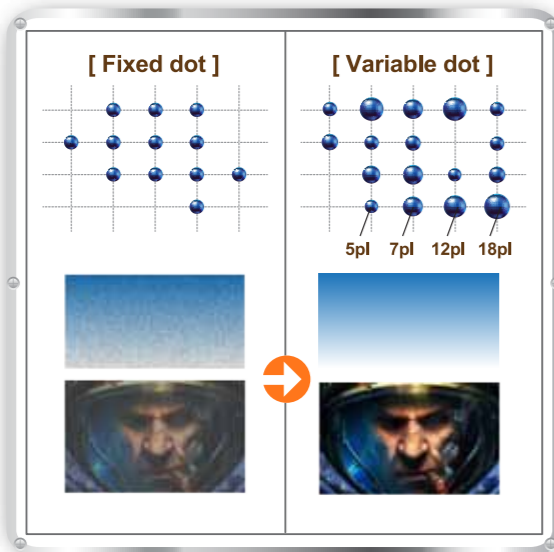


48 Print modes available to support various speeds and designs.

## VARIABLE DOT TECHNOLOGY

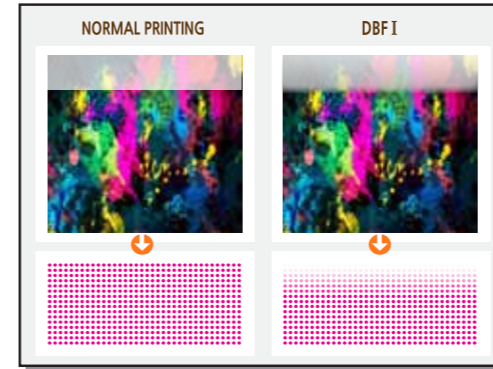
Four different dot sizes guarantee more smooth and brilliant image quality.  
5pl, 7pl, 12pl, 18pl

Customer can select different combination according to his necessity.  
(5,7,12pl or 7,12,18pl)



## DBF I PRINT MODE [DBF=DGI Band Free]

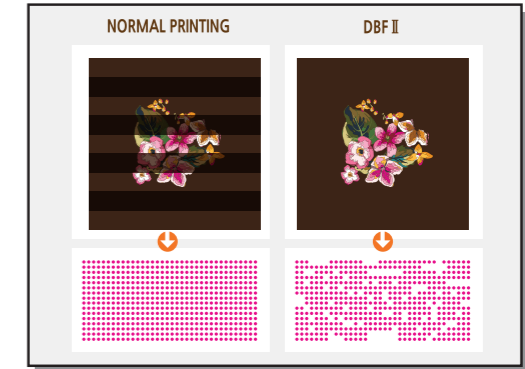
Function : To reduce feed banding.



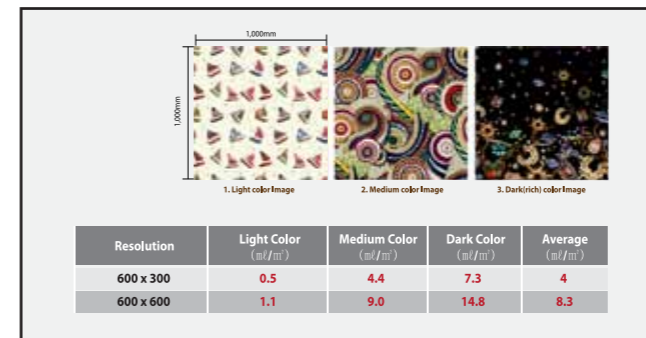
\* DBF is DGI's proprietary S/W technology to maximize print quality in any design and situation.

## DBF II PRINT MODE [DBF=DGI Band Free]

Function : To reduce discolor banding in specific color.

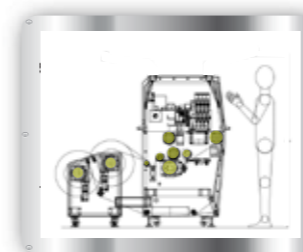


## INK CONSUMPTION



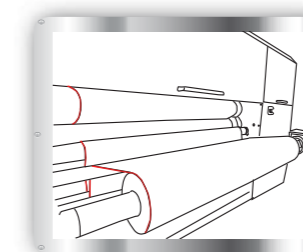
\* The data is subject to be different from the image, and condition of printing.

## TECHNICAL FEATURES



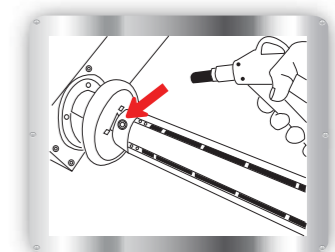
### 1. Roll to Roll Feeding System

Min weight 45gsm  
Max diameter 500mm  
Max length 3,500mm loadable



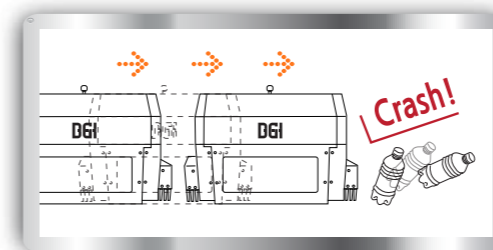
### 2. Laser Paper Alignment

Laser light works as a guidance for accurate paper setting.



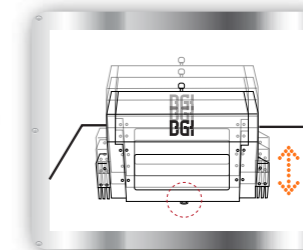
### 3. Air Shaft (Winder & Unwinder)

Air shaft guarantees more secured and tight paper feeding.



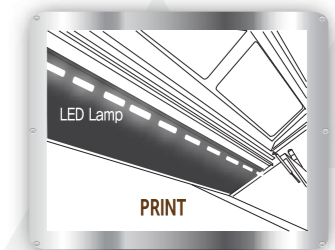
### 4. Obstacle Detection System

When the carriage finds any obstacles on the belt during printing, printer will stop automatically.



### 5. Automatic Print Gap Setting

Controls gap between printhead & fabric automatically by detecting its thickness.  
Can set up to between 2mm~15mm.



### 6. LED Lamp

LED lamps are mounted inside printer for better observation.